



# OFFICE OF CHILDREN'S SERVICES

"EMPOWERING COMMUNITIES TO SERVE YOUTH"

<https://www.csa.virginia.gov/>

## The Children's Services Act

The Children's Services Act (CSA) (§2.2-2648 et seq) was enacted in 1993 to create a collaborative system of services and funding for at-risk youth and families. State funds combined with local funds are managed by local Community Policy and Management Teams (CPMT), responsible for implementing the CSA within their communities. The CSA also establishes multidisciplinary Family Assessment and Planning Teams (FAPTs) responsible for working collaboratively with families to plan services according to each child and family's unique strengths and needs.

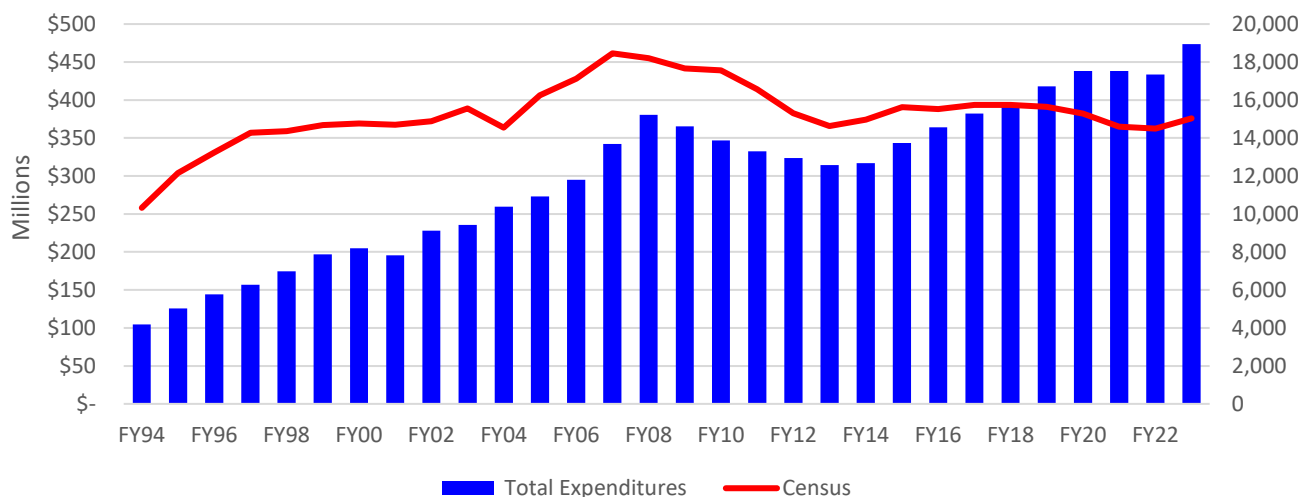
The CSA is managed at the state level by the State Executive Council (SEC), whose purpose is to assure collaborative programmatic policy development, fiscal policy development, and administrative oversight for the efficient and effective provision of services to eligible youth and families across the Commonwealth. The SEC is advised by the State and Local Advisory Team (SLAT), which was established to better serve the needs of youth and families by managing cooperative efforts at the state level and providing support to community efforts.

The Office of Children's Services (OCS) is the Commonwealth's administrative entity responsible for ensuring effective and efficient implementation of the CSA across the state. The guiding principles for the Office of Children's Services include:

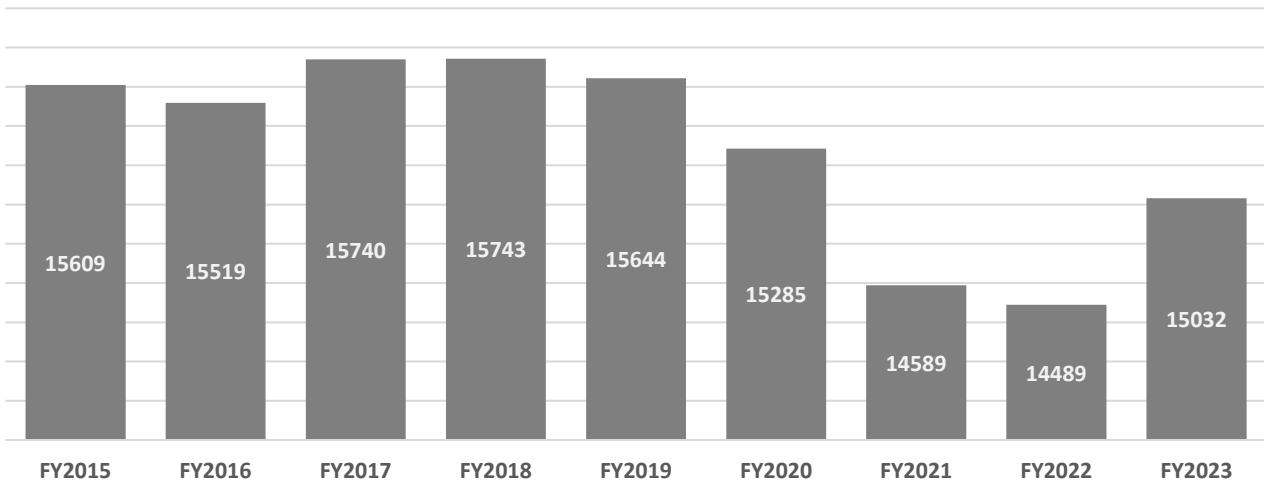
- Child and family-directed care,
- Equitable access to quality services,
- Responsible and effective use of public funds,
- Support for effective, evidence-based practices, and
- Collaborative partnerships across state, local, public, and private stakeholders.

The Children's Services Act provides various services to eligible youth and families throughout the Commonwealth. In FY2023, CSA served 15,032 children and families in the 133 cities and counties in the Commonwealth. With a combined state and local budget of over \$473 million, CSA is a significant contributor to supporting the system of care for children and families in Virginia.

**CSA Expenditures and Utilization, 1994 – 2023**

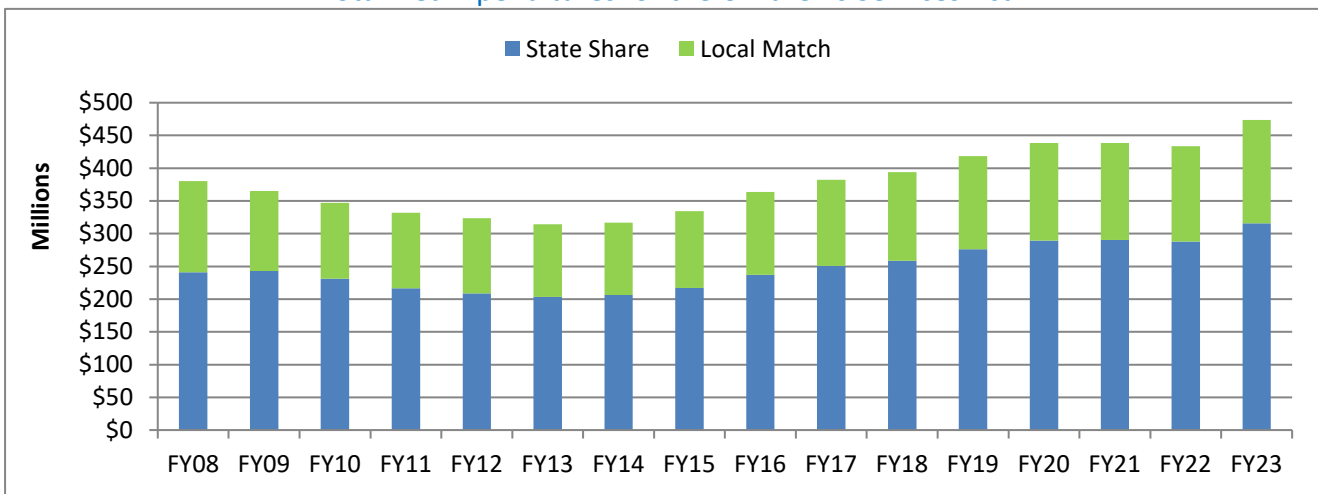


### CSA Census (FY2015 - 2023) Unduplicated Child Count



The CSA is a partnership between state and local governments. Every CSA expenditure requires a local matching contribution, with the overall local match rate being 35%. Different services have varying match rates, with residential placements having the highest match rates and community-based services having the lowest.

### Total Net Expenditures for the Children's Services Act



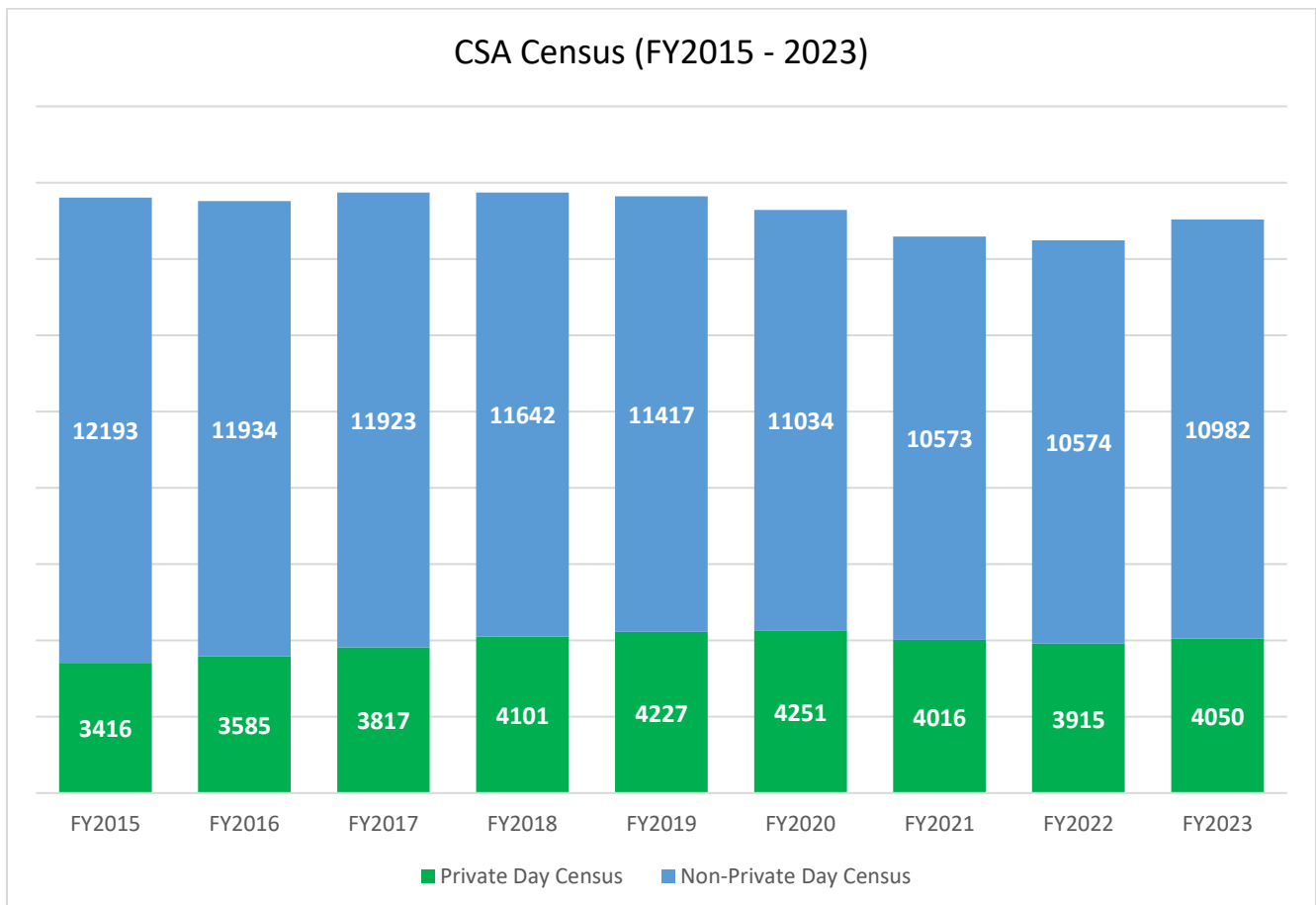
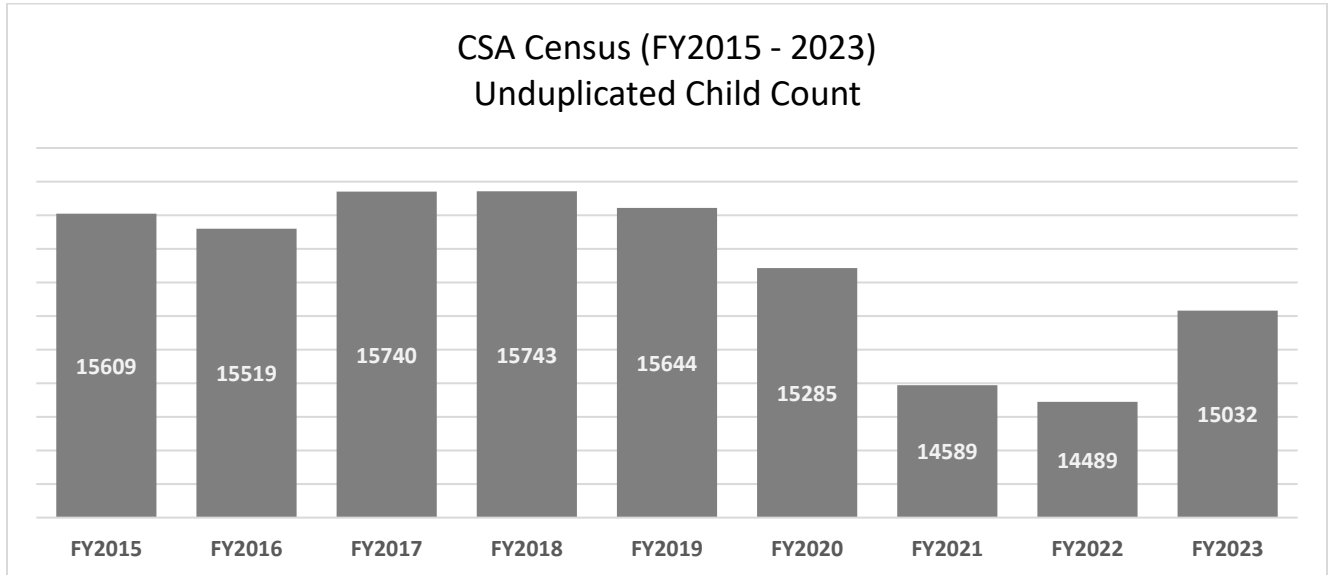
The Children's Services Act (CSA) funds various services each year. While eligibility for CSA funding is explicitly defined in §§ 2.2-5211 and 2.2-5212 of the Code of Virginia, there is significant flexibility within the Act for customized service provision based upon the eligible child and family's needs. The chart below highlights the broad categories of services supported through CSA funds and the associated percentage of expenditures.

Service Category	Service Examples	Budget %
Residential Treatment	Residential Treatment/Group Home	16%
Foster Care	Treatment Foster Care/Family Foster Care	25%
Community-Based Services	Intensive In-Home/Mentoring/Behavioral Therapies/Parent Coaching/Assessments	14%
Special Education	Private Special Education Schools/ Special Education Wraparound Services	46%

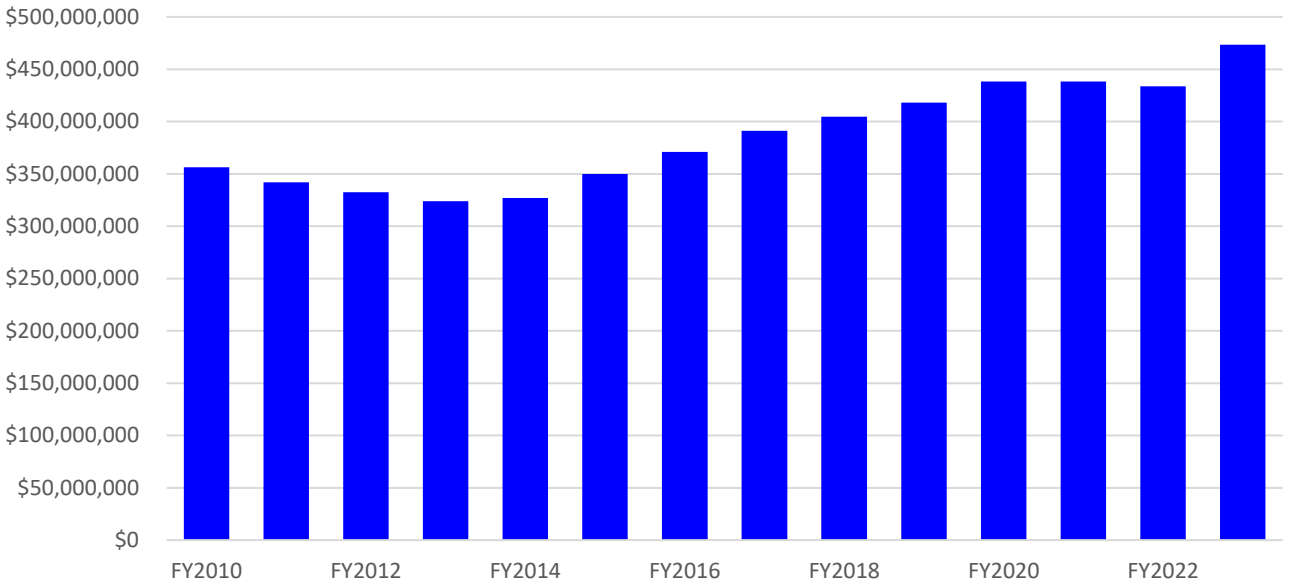
## Summary of CSA Utilization and Expenditure Data – FY 2023

Sources: Pre-2017 – CSA Data Set (Census) and CSA Expenditure Reports (Expenditures)

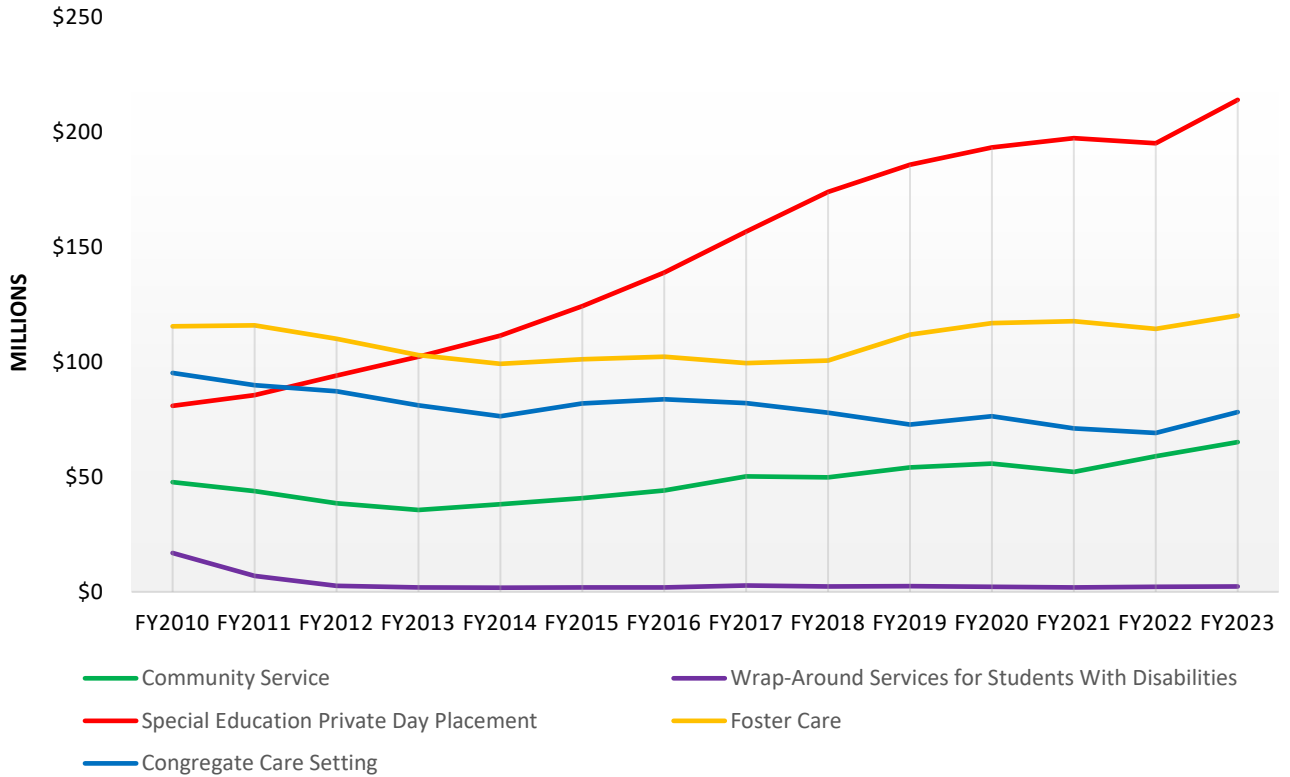
2017 – present – CSA Local Expenditure, Data, and Reimbursement System, LEDRS



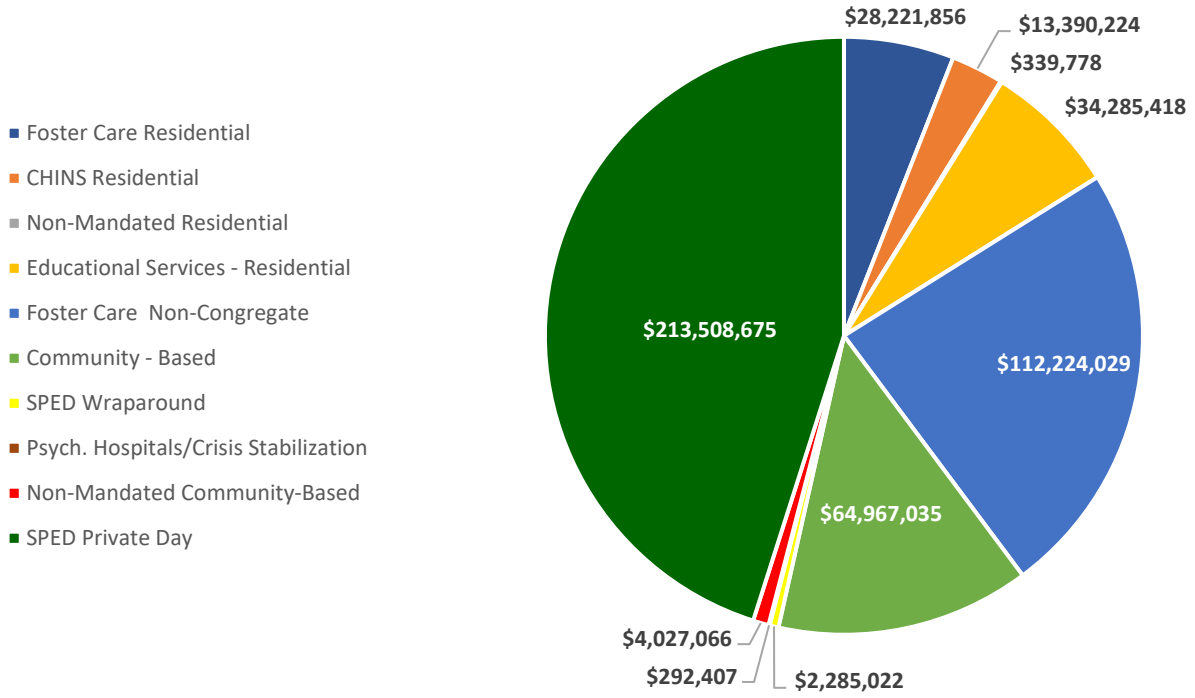
### Total CSA Net Expenditures (2010 - 2023)



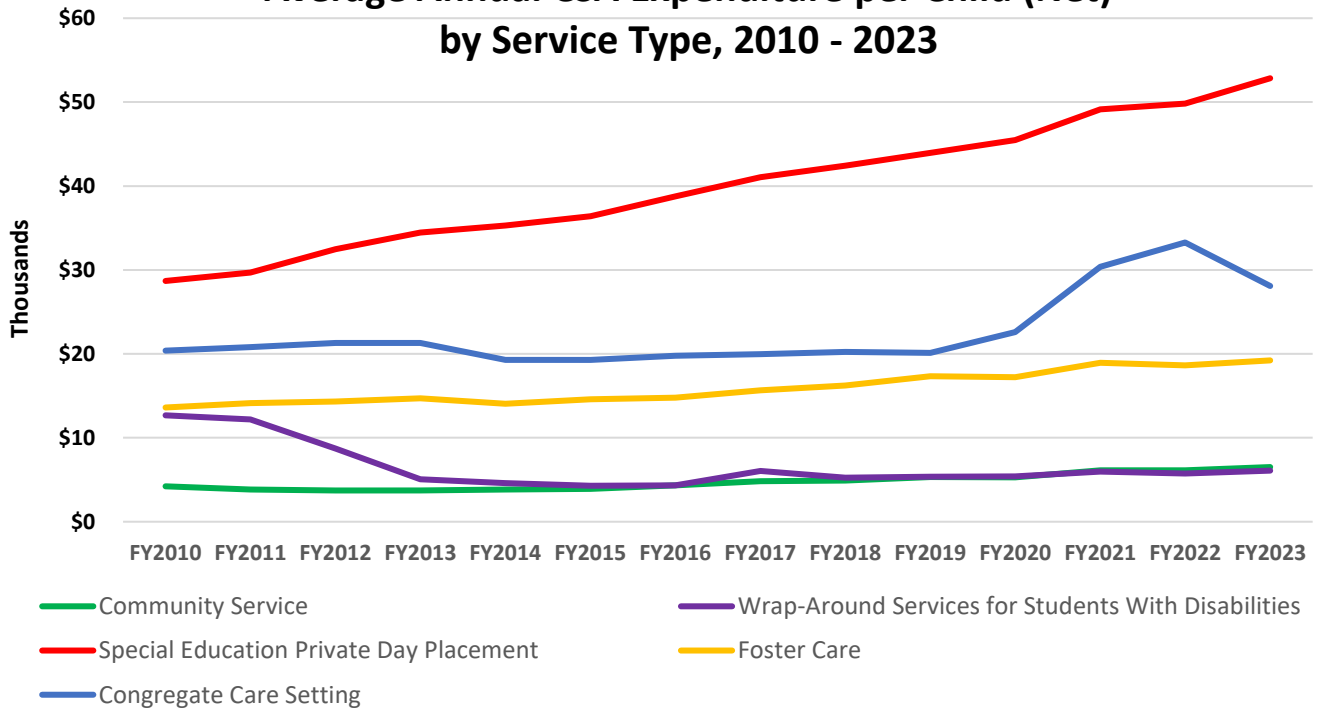
### CSA Expenditures (Net) 2010 - 2023



### CSA Expenditures by Category FY23 (Net = \$473,541,511)



### Average Annual CSA Expenditure per Child (Net) by Service Type, 2010 - 2023



# Judicial Bench Card :

## Evidence-Based Programs for Youth and Families



---

## A Guide to Available Evidence-Based Programs in Virginia.

The term **evidence-based** means that the listed services in this guide have published studies that demonstrate that they reduce the need for (a) foster care, (b) hospitalization, and (c) other types of residential placement. Studies also suggest that they reduce negative behaviors (e.g., substance abuse) and strengthen family supports. Many include additional benefits to family members and their behavioral health, in addition to the impact shown for youth.

### **Evidence-Based Services currently available in Virginia:**

- Brief Strategic Family Therapy (BSFT®)
- Family Check-Up (FCU)
- Functional Family Therapy (FFT)
- High Fidelity Wraparound (HFW or HiFi)
- Homebuilders (HB)
- Multisystemic Therapy (MST)
- Parent-Child Interaction Therapy (PCIT)

### **Available Payment Sources for Evidence-Based Programs**

The Children's Services Act (CSA), through FAPT (Family Assessment and Planning Teams) recommended services, can pay for evidence-based programs. Additionally, a child that has an open Foster Care In-Home case (previously known as CPS Ongoing or Foster Care Prevention) is eligible to receive these services through the Family First Prevention Services Act. There are additional funding sources as described on the chart.

## Bench Card: Evidence-Based Programs Available in Virginia

Evidence-Based Program	Age Range	Problem Area	Outcomes*	Funding Source
Brief Strategic Family Therapy (BSFT®)	6-17	Dysfunctional family patterns; Children with serious behavioral problems	Lower likelihood of future law involvement	Family First, CSA, Medicaid
Family Check-Up (FCU)	2-17	Any issue plus lack of motivation for treatment; Disengaged family members	Greater likelihood to engage in treatment that follows; Family wellbeing	Family First, CSA, Medicaid
Functional Family Therapy (FFT)	11-18	Youth substance use, disruptive behavior and conduct issues, depression; Family conflict	Better coping skills; greater family cohesion	Family First, CSA, DJJ Medicaid
High Fidelity Wraparound (HFW)	0-18	Youth substance use, disruptive behavior and conduct issues, depression; Family conflict	Better coping skills; greater family cohesion	Family First, CSA
Homebuilders	0-17	Crisis; Children at imminent risk of removal, or seeking reunification	Placement stability through created change in the family system	Family First, CSA
Multisystemic Therapy (MST)	12-17	Conduct issues; Truancy; Law involvement; Poor parent mental health	Increase parent's effectiveness, reduce law involvement; Less disruptive behavior	Family First, CSA, DJJ Medicaid
Parent-Child Interaction Therapy (PCIT)	2-7	Defiance, aggression, extreme mood swings; Ineffective social skills; Safety concerns	Positive parenting skills; decreased parent sadness and irritability; Stronger parent-child bond	Family First, CSA, Medicaid

\*Outcomes that could be reasonably expected based on the evidence examined by CEP-Va through the FFPSA Clearinghouse and studies published more recently that may not yet be included in the Clearinghouse

While Virginia continues to expand access to Evidence-Based Programs, not all programs are available in every jurisdiction. Probation Officers, LDSS staff, CSA Coordinators, and others who serve on area FAPTs and CPMTs (Community Policy Management Team) should be aware of available services.

[EBPFinder.org](http://EBPFinder.org) may be used to locate select EBPs in Virginia by locality.

